



EVERBLUE

Modular systems



EVERBLUE has designed and produced unique and innovative products

HOUSINGS FOR FILTRATION CARTRIDGES

- **FILTRO FM1 FON-1 (made in SS AISI 316)**
- **FILTERONE FON-1 (made in polypropylene)**
- **FILTERBLUE (made in glassfiber GRP)**

FILTRATION CARTRIGES

- **FILTERONE (FON)**
- **FILTERBLUE**

PATENT

- **FILSTAR**

(internal rigid support for pleated cartridges)



The main characteristic of the EVERBLUE products are:

- QUALITY**
- UNIQUE**
- SIMPLICITY**
- MODULAR**



What does the OEMs use ?

HIGH FLOW RATE = BIG FILTER HOUSING





Plant: KENIAMBO – Nuova Caledonia

Manufacturer: DEGREMONT

Date: 2009

Flow rate: 720 m³/h + 240 m³/h spare

Model: EVERBLUE – FIB 7X40" FON





How the plant is

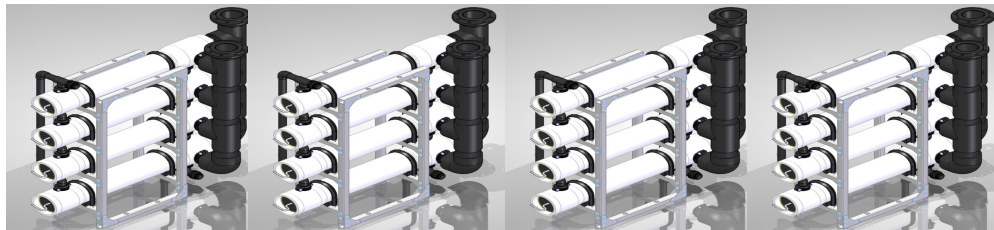


Cost of each housing: Euro 11.500,00
Cost of 4 housings: Euro 46.000,00

Cost of the frame and stairs:
Euro 8.500,00

Total: Euro 54.500,00

How the plant can be



Cost of 1 battery with 4 housings:
Euro 8.000,00

Cost of 4 batteries: Euro 32.000,00

Total: Euro 32.000,00

DIFFERENCE: Euro 22.500,00

41% LOWER



The main features of the new EVERBLUE products are:

- **QUALITY**
- **UNIQUE**
- **SEMPPLICITY**
- **MODULAR**
- **Only one housing for all the flow rate**
- **Fast delivery**
- **Minimum costs of the spare parts**
- **Minimum cost of investment**
- **Minimum footprint**





The modular products of EVERBLUE are:

HOUSINGS FOR FILTRATION CARTRIDGES

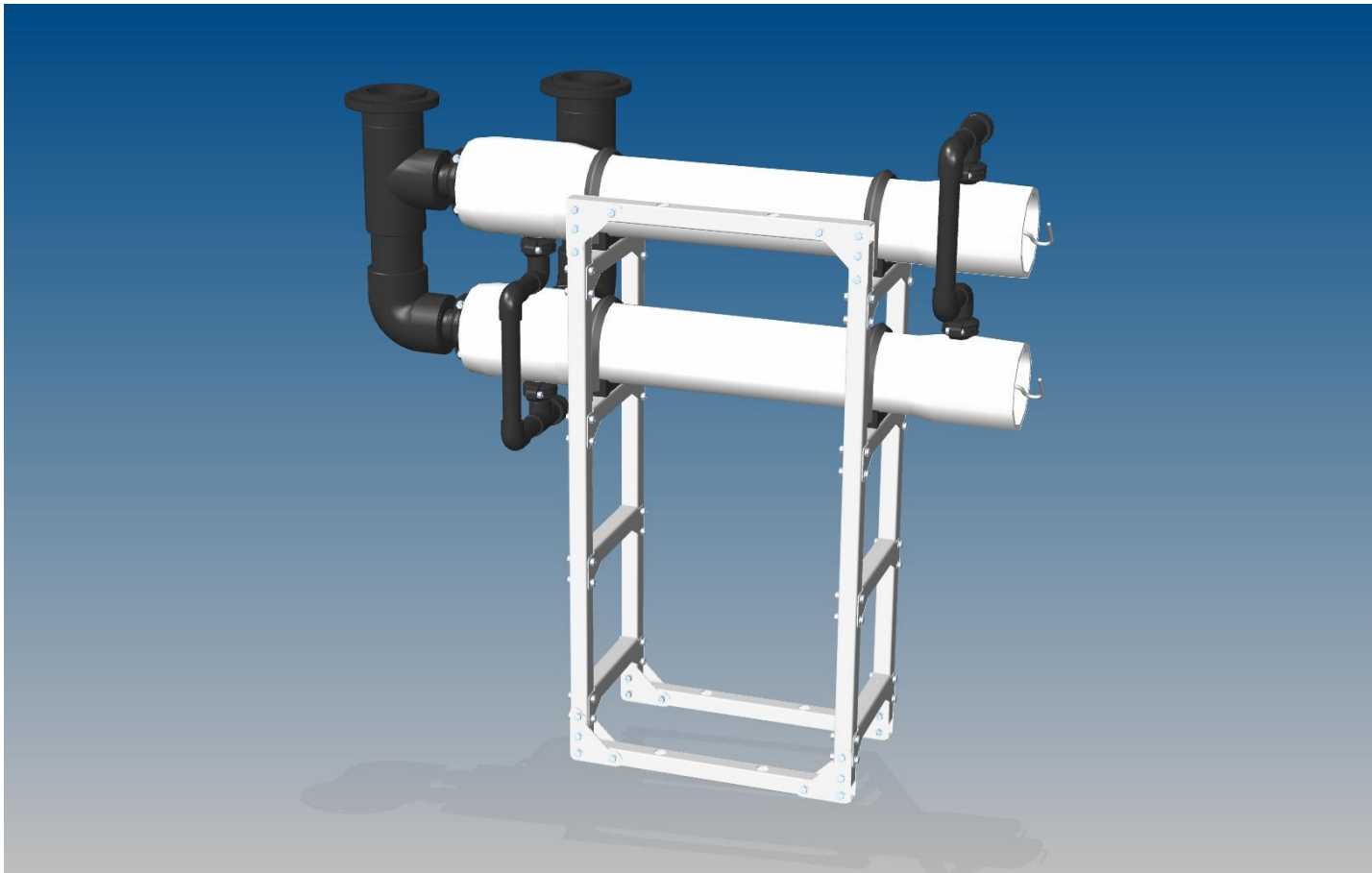
- **FILTRO FM1 FON-1 (made in SS AISI 316)**
- **FILTERONE FON-1 (made in polypropylene)**
- **FILTERBLUE (made in glassfiber GRP)**

HOUSINGS FOR BAG FILTERS

- **FBE (made in SS AISI 316)**

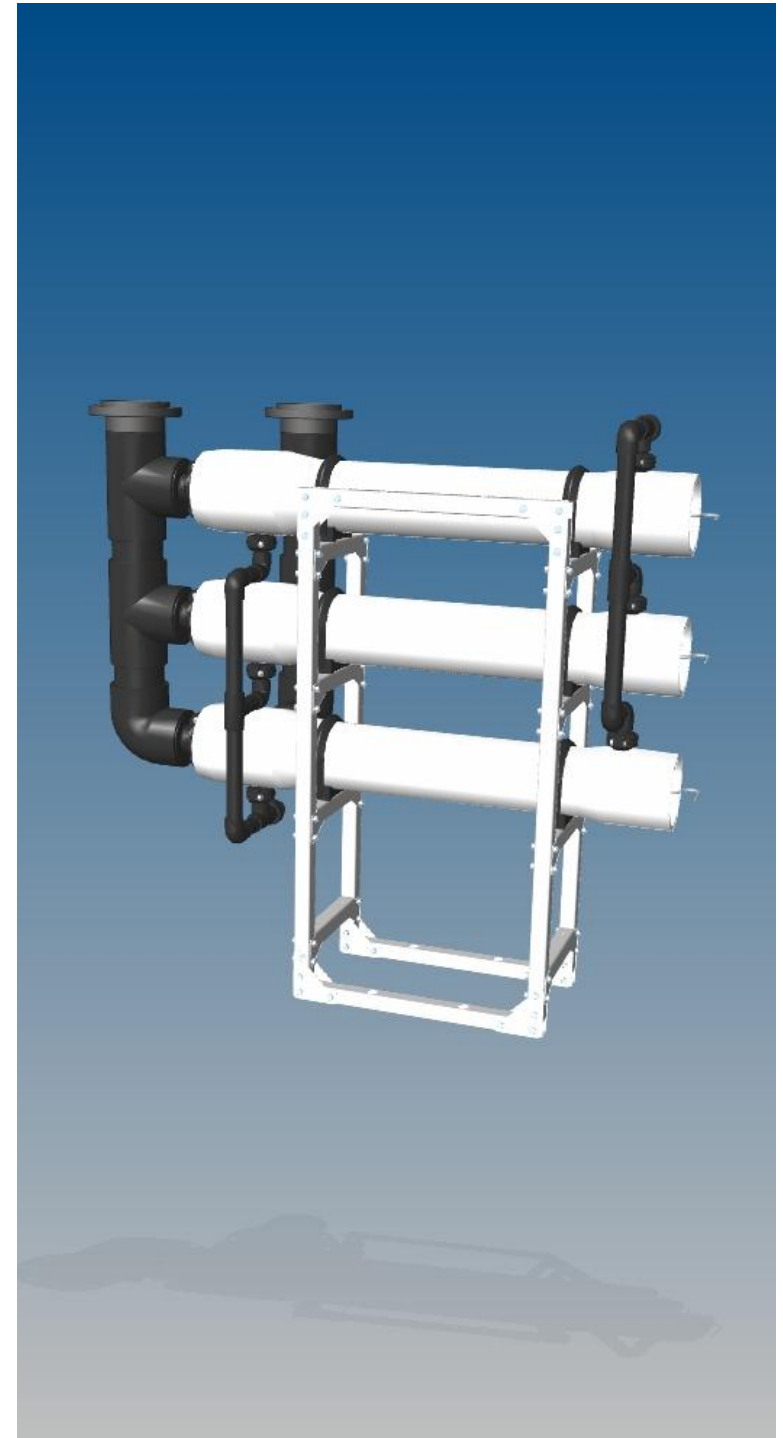


FILTERBLUE – 2 HOUSINGS **(72 M3/H – 5 micron)**



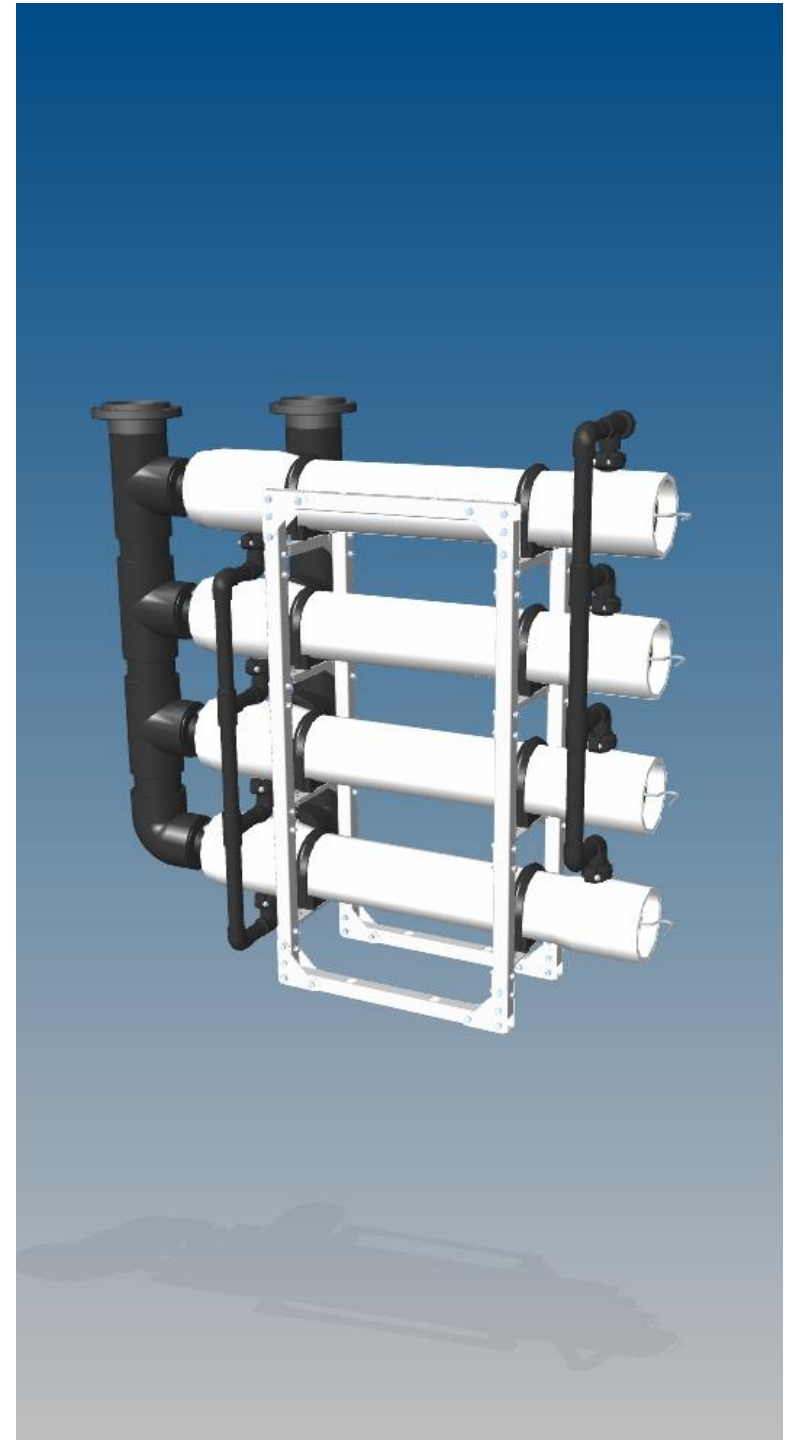


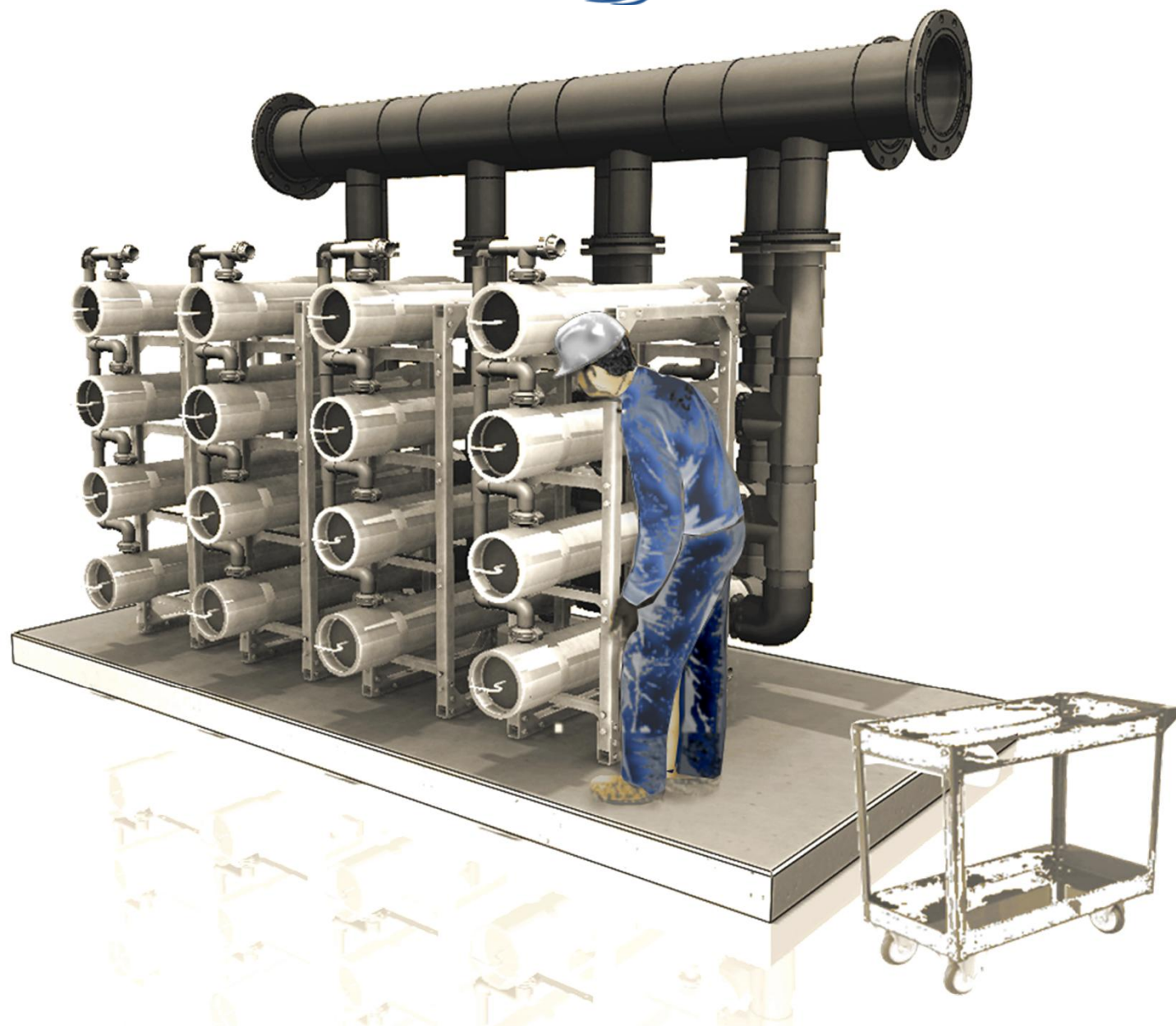
FILTERBLUE – 3 HOUSINGS **(108 M3/H – 5 micron)**





FILTERBLUE – 4 HOUSINGS **(144 M3/H – 5 micron)**







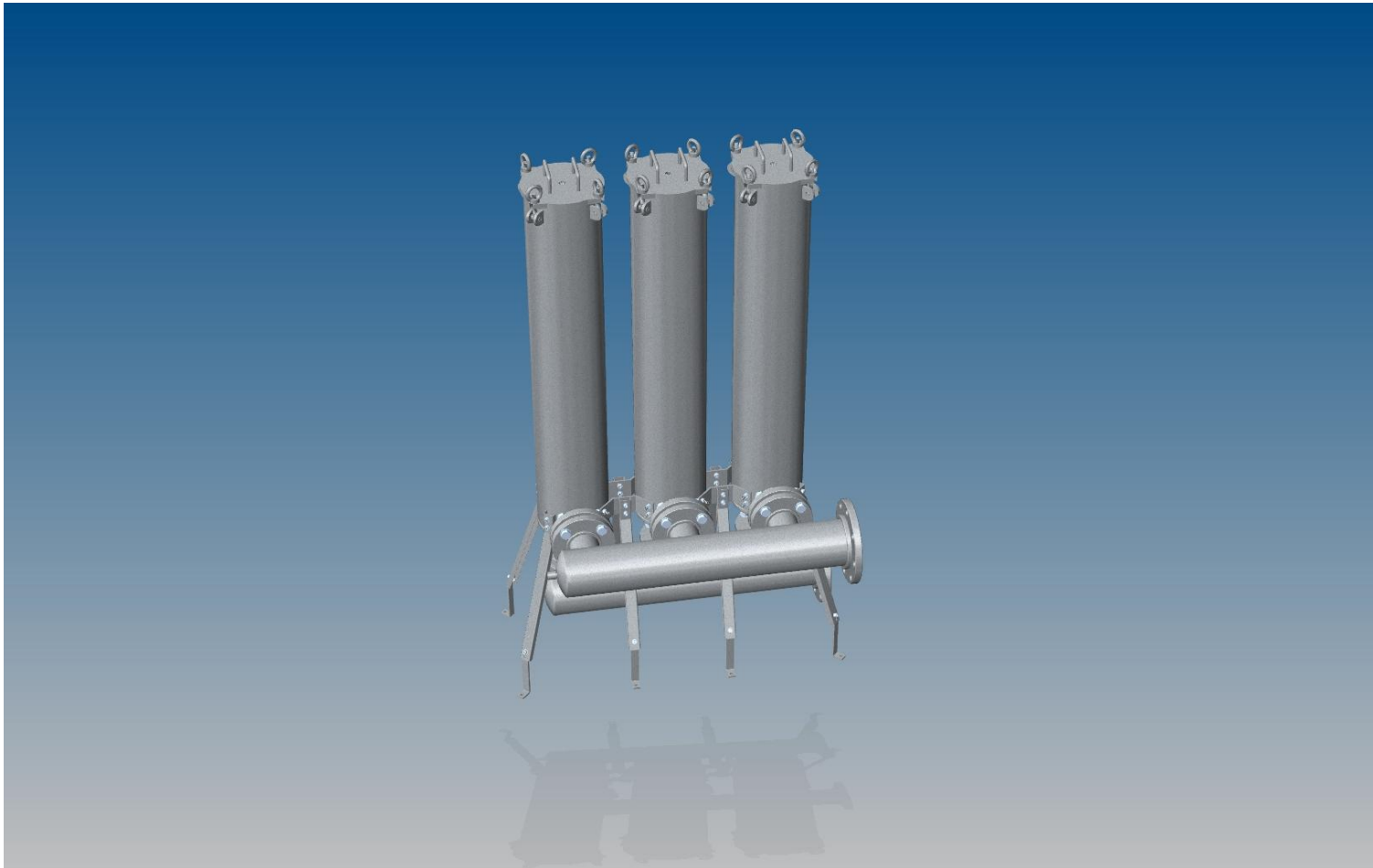


FM1 – FON – 2 HOUSINGS (60 M3/H – 5 micron)



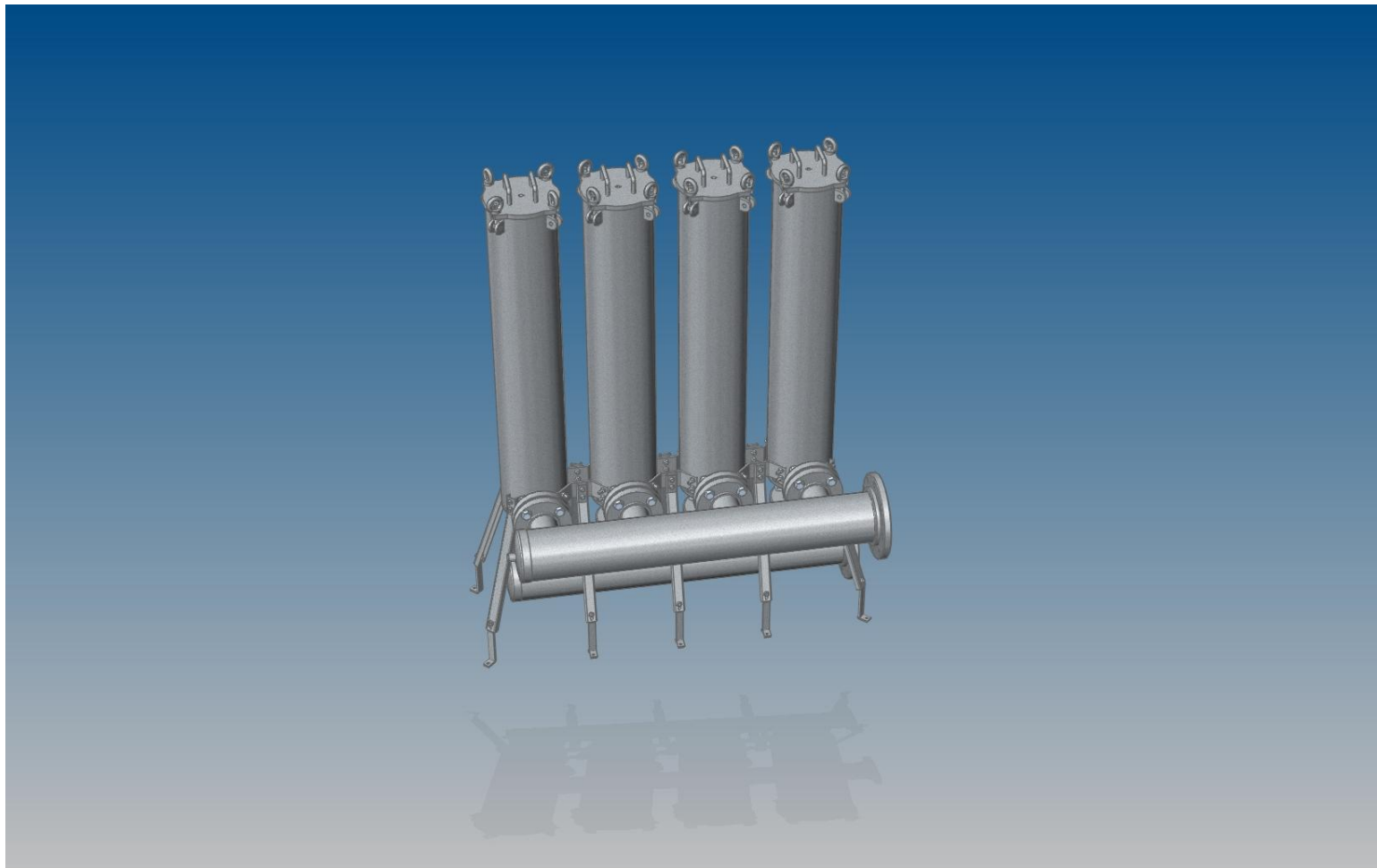


FM1 – FON – 3 HOUSINGS (90 M3/H – 5 micron)





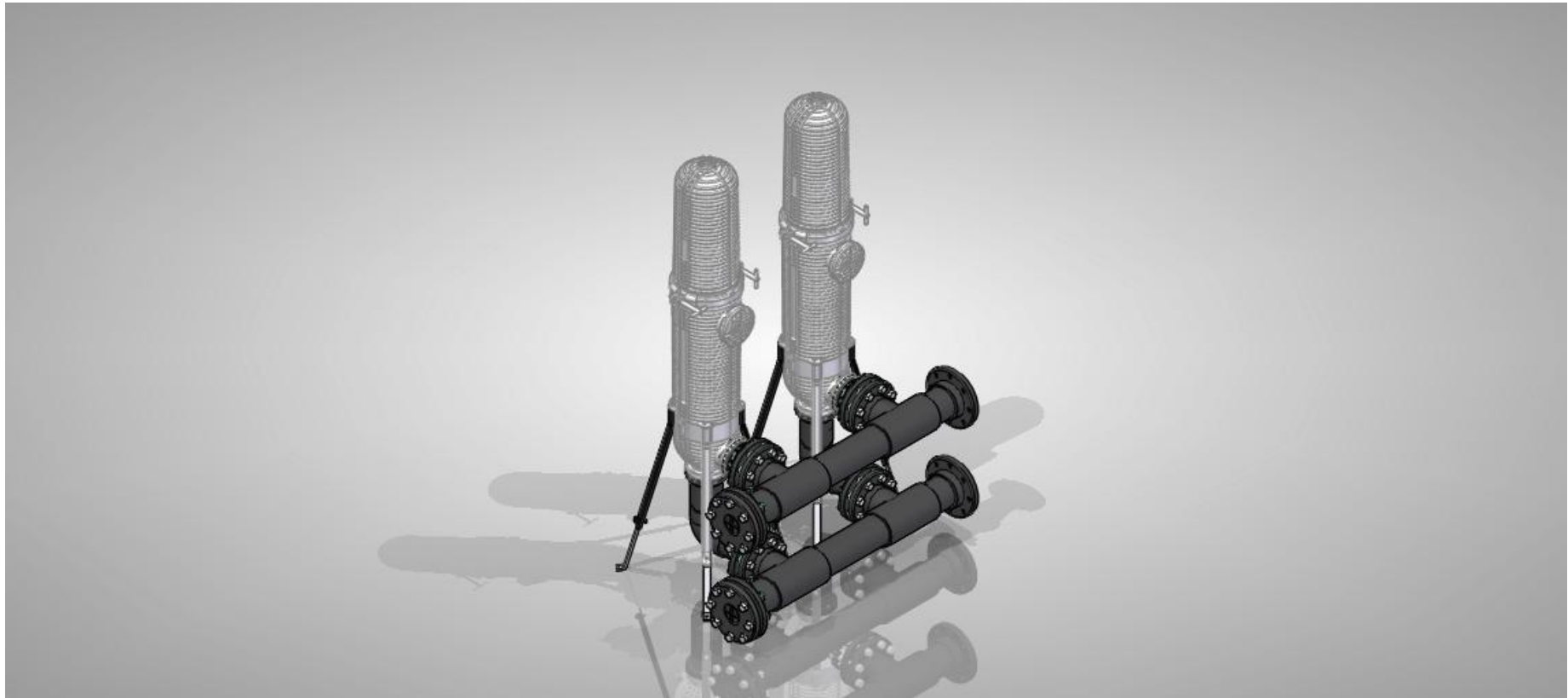
FM1 – FON – 4 HOUSINGS (120 M3/H – 5 micron)





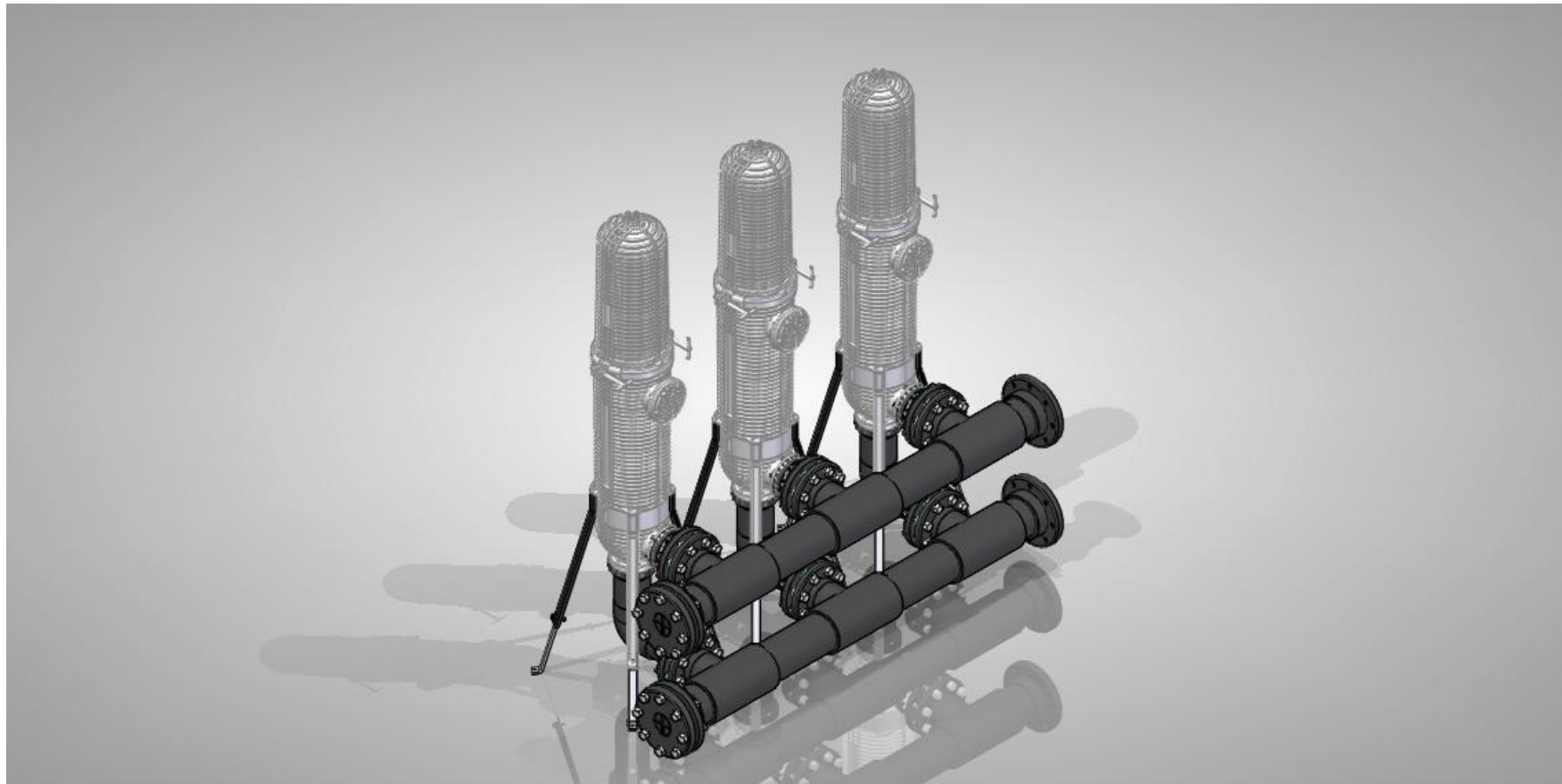
FILTERONE – FON – 2 HOUSINGS

(60 M3/H – 5 micron)





FILTERONE – FON – 3 HOUSINGS **(90 M3/H – 5 micron)**





FILTERONE – FON – 4 HOUSINGS (120 M3/H – 5 micron)

